

# 100% DENMARK

Transition to 100% wind, water, and solar (WWS) for all purposes  
(electricity, transportation, heating/cooling, industry)



Residential rooftop solar  
**1.6%**



Solar plant  
**8.6%**



Concentrated solar plant  
**0%**



Onshore wind  
**28%**



Offshore wind  
**57%**

## 2050

PROJECTED ENERGY MIX

Commercial/govt rooftop solar  
**1.7%**



Wave energy  
**3%**



Geothermal energy  
**0%**



Hydroelectric  
**0%**



Tidal turbine  
**0.1%**



### 40-Year Jobs Created

Number of jobs where a person is employed for 40 consecutive years

Operation jobs:



**31,598**

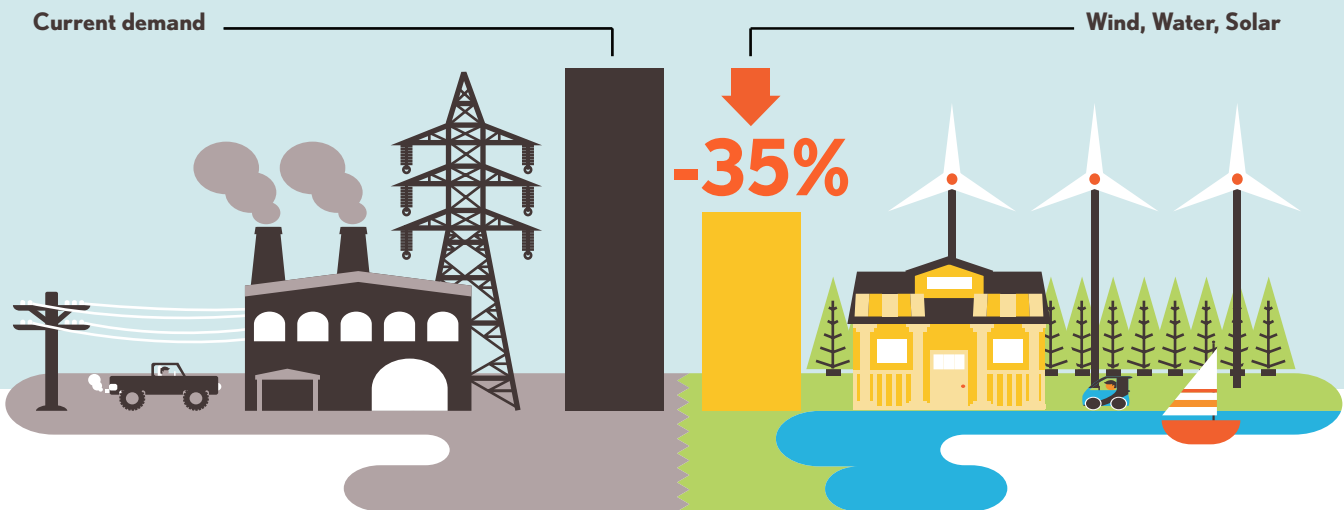
Construction jobs:



**18,574**

= 2,000

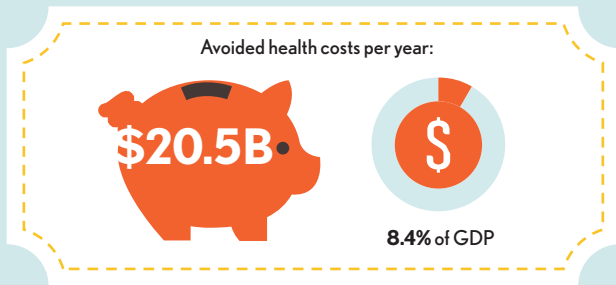
Using WWS electricity for everything, instead of burning fuel, and improving energy efficiency means you need much less energy.



# 100% DENMARK

Transition to 100% wind, water, and solar (WWS) for all purposes  
(electricity, transportation, heating/cooling, industry)

## Avoided Mortality and Illness Costs



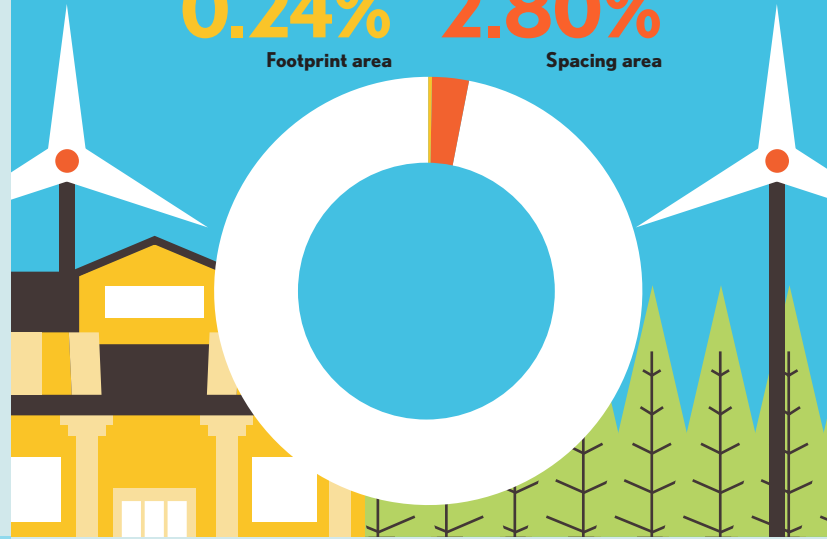
Air pollution deaths avoided every year: **4023**



Plan pays for itself in as little as **1.6** years from air pollution and climate cost savings alone.

## Percentage of Land Needed for All New WWS Generators

**0.24%** Footprint area  
**2.80%** Spacing area



## Future Energy Costs 2050

BAU (Business as usual)      WWS (Wind, water, solar)



Average fossil-fuel energy costs\*

**12.2 c/kWh**

\*Health and climate external costs of fossil fuels are another 5.7c/kWh



Average WWS electricity costs

**12.9 c/kWh**

## Money in Your Pocket

**(P)** = \$1000

Annual energy, health, and climate cost savings per person in 2050: **\$7424**



Annual energy cost savings per person in 2050: **\$145**

